



HYDRO FLOW PRODUCTS, INC.

Phone: 888-202-9987  
Fax: 847-434-0073  
Email: [service@flowtest.com](mailto:service@flowtest.com)  
[www.hosemonster.com](http://www.hosemonster.com)

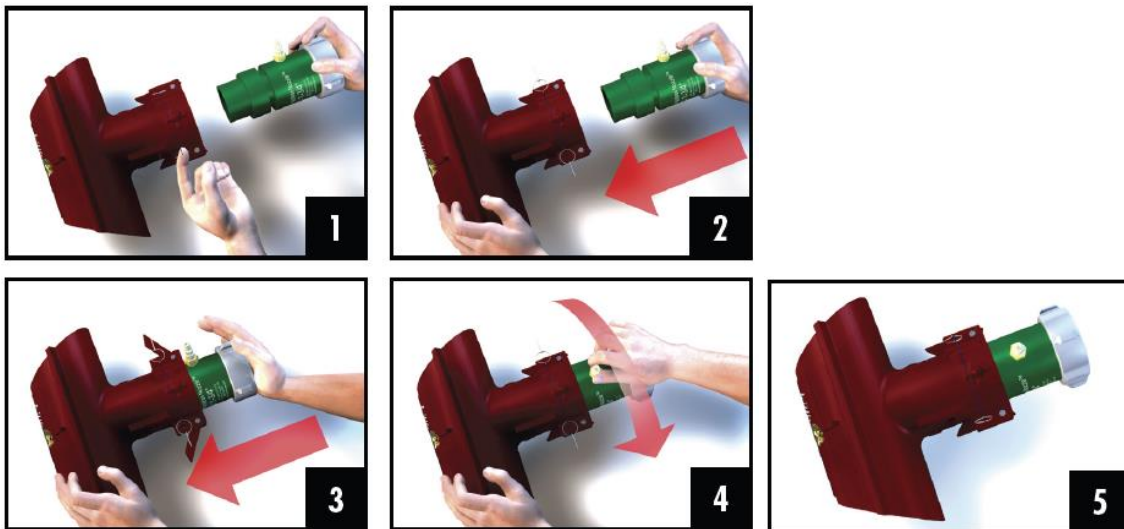


Item#: HML

### OVERVIEW

Thank you for using the Little Hose Monster™. Before using, please read these instructions as well as the Pitotless Nozzle™ instructions completely. For repairs, questions or comments on the Little Hose Monster please contact Hydro Flow Products directly.

Use the Little Hose Monster to measure water flow-rate and to diffuse and divert discharge water in fire pump testing, fire flow testing, and main flushing. The Little Hose Monster may only be connected to the Pitotless Nozzle Grooved (PN#GRV) or the Flushing Nozzle (FN). To measure flow-rate use the Pitotless Nozzle. If flow rate measurement is not necessary, use the Flushing Nozzle.



### INSTALLING THE PITOTLESS NOZZLE™ OF FLUSHING NOZZLE

- 1) Remove locking pins if inserted in pinhole.
- 2) Line up the Pitotless Nozzle or Flushing Nozzle outlet with the inlet of the Little Hose Monster. The Pitotless Nozzle gauge port should be rotated to 45° off either side of vertical.
- 3) Push the Nozzle all the way in until the latch-lever arms hook into the groove.
- 4) Rotate the Nozzle until the latch-levers snap parallel to the body and the gauge port is in the desired position. The gauge port can be rotated so that a gauge can be viewed in a vertical position, or horizontal to the left or right side of the Little Hose Monster.

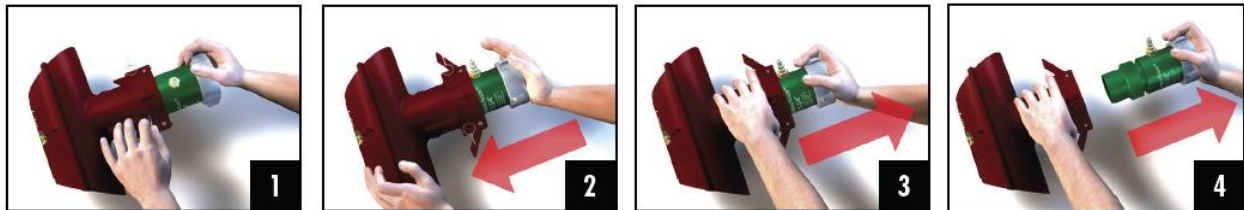
- 5) Insert the locking pins all the way through the pinhole and latch-lever arm. When the Pitotless Nozzle or Flushing Nozzle is installed securely, attach a hose using a spanner wrench. Make sure the hose lays flat and is not twisted.

#### CAUTION

- Use with Pitotless Nozzle Grooved or Flushing Nozzle only.
- Verify that Nozzle is installed correctly. Both latch-lever arms must be parallel to body with locking pins fully inserted. Failure to install the nozzle correctly may result in the Little Hose Monster separating from the nozzle under flow conditions causing a dangerous situation.
- Only use equipment in good condition.

#### REMOVING THE PITOTLESS NOZZLE OR FLUSHING NOZZLE

- 1) Remove locking pins from pinhole.
- 2) Push the Nozzle into the Little Hose Monster. The latch-levers will open up and be at approximately 45° off the body of the Little Hose Monster.
- 3) Hold both latch-levers out using one hand.
- 4) Slide the nozzle completely out with your other hand.



#### MAINTENANCE

- Wipe down the product with a damp rag after each use to remove dirt and debris.
- Inspect Wear-Guards (Foot Clips): Wear-Guards are stainless steel J-shaped brackets designed to protect the Polypropylene legs of the Little Hose Monster from deterioration caused by frictional contact with pavement surfaces. Check for excessive wear or if any are bent or missing. Replacement Wear-Guards are available through Hydro Flow Products.



#### SAFETY AND HANDLING

ALL CONNECTIONS IN THIS ASSEMBLY MUST BE ATTACHED SECURELY. DIRECT WATER DISCHARGE AWAY FROM ANY PEOPLE OR PROPERTY THAT MAY BE AFFECTED. THE USE OF THIS PRODUCT INVOLVES HEAVY WATER FLOW WHICH CAN RESULT IN SERIOUS INJURY OR DEATH IF USED IMPROPERLY. THE MANUFACTURER AND ITS DISTRIBUTORS ARE NOT RESPONSIBLE FOR ANY DAMAGE OR INJURY CAUSED BY THE USE OF THIS PRODUCT. PRODUCTS THAT HAVE BEEN ALTERED OR MODIFIED IN ANY WAY POSE A SAFETY RISK AND WILL VOID THE MANUFACTURER'S WARRANTY.