

KUNKLE

**Model 215V is Non-code Vacuum Relief.
Model 337 is ASME Section VIII Air/Gas
“UV” National Board Certified Safety Valve.
Both are PED Certified for Non-Hazardous Gas.**

Features

- Large nozzle design provides high capacity.
- Flat bronze valve seats are lapped for optimum performance.
- Warn ring offers easy adjustability for precise opening with minimum pre-open or simmer.
- Pivot between disc and spring corrects misalignment and compensates for spring side thrust.
- Each Kunkle valve is tested and inspected for pressure setting and leakage.

Model Descriptions

- **Model 337:** has “lift-pin” lift device for easy manual testing.
- All adjustments are factory sealed to help prevent tampering or disassembly.

Option

- Stainless Steel (SS) trim. (nozzle and disc) (variation 03)

Applications

- Protection of low to medium pressure high volume blowers, compressors and pneumatic conveying systems.
- Bulk hauling trailers/equipment.
- Light gauge tanks.
- Protection of high volume vacuum pumps and conveying systems.



Vacuum Limits

Model 215V:

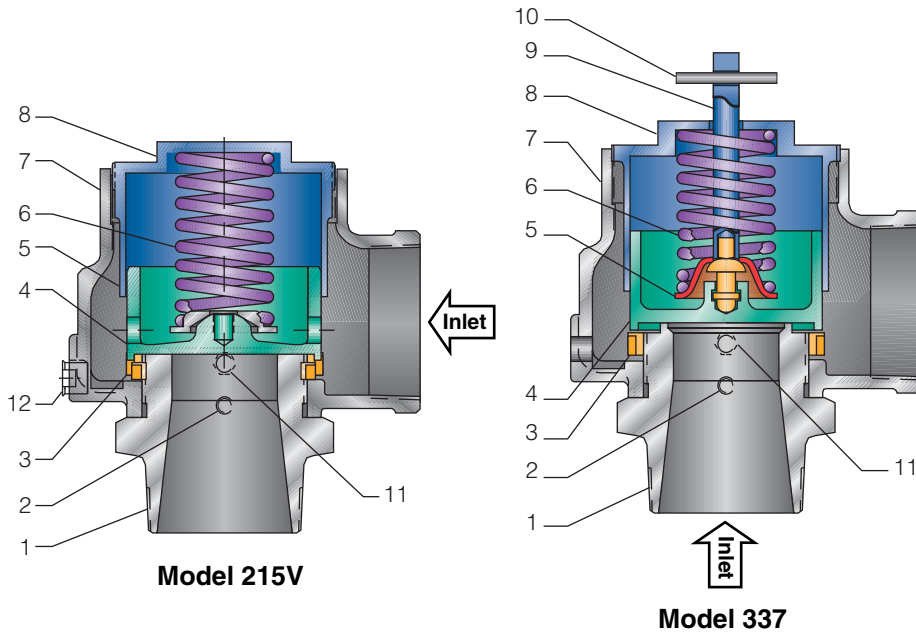
2" Hg to 29" Hg [67.7 to 982 mbarg]
-20° to 406°F [-29° to 208°C]

Pressure and Temperature Limits

Model 337:

1 to 60 psig [0.07 to 4.1 barg]
-20° to 406°F [-29° to 208°C]

Parts and Materials



Models 215V and 337

No.	Part Name	215V	337
1	Nozzle ¹	Bronze, SB62 or Brass B283-C48500	Bronze, SB62 or Brass B283-C48500
2	Set Screw	Steel A108-1018 Brass Plated	Steel A108-1018 Brass Plated
3	Regulator Ring	Bronze B584 Alloy 84400	Bronze B584-C84400
4	Disc ¹	Bronze B584 Alloy 84400	Bronze B584-C84400
5	Spring Step	Steel A-109 Coated ³	Steel A109 Coated ³
6	Spring	SS, A313 TY 302	SS A313-302
7	Body	Cast Iron A-126, CL A or B	Iron A-126, CL A or B
8	Compression Screw	Bronze, B-584 Alloy 84400	Bronze, B584-C84400
9	Stem ²	N/A	Brass B16
10	Lift Pin ²	N/A	Steel, Zinc Plated
11	Regulator Ring Set Screw	N/A	Brass B16
12	NPT Drainplug	Steel A108-1018	N/A

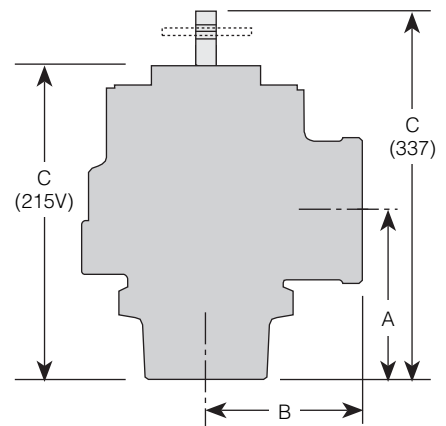
Notes

1. Disc and nozzle available in SSA-479 TY 316.
2. Stem and lift pin available on Model 337 only.
3. Corrosion preventative coating.

Specifications

Size Inlet and Outlet	Dimensions, in [mm]				Weight lb [kg]
	A	B	C 215V	C 337	
2" [50.8 mm]	3 1/4 [82.5]	3 [76.2]	6 1/2 [165.1]	7 [177.8]	8 [3.6]
2 1/2" [63.5 mm]	3 3/4 [95.2]	3 1/2 [88.9]	7 5/8 [194.6]	8 [203.2]	12 [5.4]
3" [76.2 mm]	4 1/4 [107.9]	4 [101.6]	8 1/2 [215.9]	9 [228.6]	20 [9.07]

Dimensions are for reference only.



Model 337

Capacities

**Model 337, Non-code¹ and ASME Section VIII
Air (SCFM)**

Set Pressure (psig)	Valve Inlet and Outlet Size		
	2"	2 1/2"	3"
	Orifice Area, in ²		
	1.84	2.79	4.04
1	240	364	527
5	531	805	1166
10	741	1124	1628
15	948	1436	2081
20	1092	1656	2399
25	1237	1875	2718
30	1382	2095	3036
35	1542	2337	3386
40	1701	2578	3736
45	1860	2820	4086
50	2020	3061	4436
55	2179	3303	4786
60	2338	3544	5136

Note

1. No code stamp or "NB" on nameplate below 15 psig set.

**Model 337, Non-code¹ and ASME Section VIII
Air [Metric, Nm³/h]**

Set Pressure [barg]	Valve Inlet and Outlet Size		
	50 mm	63 mm	80 mm
0.5	1049	1589	2303
1.0	1457	2208	3200
1.5	1888	2861	4147
2.0	2235	3387	4910
2.5	2613	3959	5739
3.0	2995	4538	6579
3.5	3377	5117	7418
4.0	3760	5696	8258

Note

1. No code stamp or "NB" on nameplate below 1.1 barg set.

Model 215V, Non-code Vacuum Air (SCFM)

Relief Set (in, HG)	Valve Inlet and Outlet Size		
	2"	2 1/2"	3"
	Orifice Area, in ²		
	1.84	2.79	4.04
2	229	347	503
5	338	512	742
10	415	630	912
15	426	646	936
20	426	646	936
29	426	646	936

Note

1. Based on 10% accumulation.

Model 215V, Non-code Vacuum Air [Metric, Nm³/h]

Relief Set [mbarg]	Valve Inlet and Outlet Size		
	5.08 cm	6.35 cm	7.62 cm
	Orifice Area		
	[11.86 cm ²]	[17.97 cm ²]	[26.05 cm ²]
50	328	498	722
100	450	682	988
150	533	807	1170
200	593	899	1303
250	638	966	1400
300	669	1014	1470
350	690	1046	1516
400	701	1062	1540
450	704	1067	1546
500	704	1067	1546
550	704	1067	1546
600	704	1067	1546
650	704	1067	1546
700	704	1067	1546
750	704	1067	1546

Note

1. Based on 10% accumulation.

Kunkle Safety and Relief Products

Models 215V and 337

Model Number/Order Guide

Model Number Position

1	2	3	4	5	6	7	8	9	10	11	12	13	14	15
---	---	---	---	---	---	---	---	---	----	----	----	----	----	----

Example

2	1	5	V	—	H	0	1	A	Q	E	0	0	5	0
---	---	---	---	---	---	---	---	---	---	---	---	---	---	---

Model

215V
0337

Inlet Size

H - 2" [50.8 mm]
J - 2 1/2" [63.5 mm]
K - 3" [76.2 mm]

Variation (01 to 99)

01 - Bronze Disc and Nozzle
03 - SS Disc and Nozzle
60 - BSP Connections

Design Revision

Indicates non-interchangeable revision.
Current Design is at Revision "A."

Valve Service

K - Air ASME Section VIII (Model 337 only)
Q - Vacuum (Model 215V only)
N - Non-code Air/Gas (Model 337 only)

Spring Material

E - SST Type 302
(H-Orifice up to 8 psi; J-Orifice up to 20 psi; K-Orifice up to 25 psi)
M - SST Type 17-7
(H-Orifice above 8 psi; J-Orifice above 20 psi; K-Orifice above 25 psi)

Set Pressure

Model 337, 1 psig [0.7 barg] (0001) to 60 psig [4.1 barg] (0060)
Model 215V, 2" Hg [68 mbarg] (0002) to 29" Hg [982 mbarg] (0029) vacuum

KUNKLE

953 Old U.S. Highway 70
Black Mountain, North Carolina 28711-2549
Customer Service Phone: 1-828-669-3700

www.kunklevalve.com

Tyco Flow Control (TFC) provides the information herein in good faith but makes no representation as to its comprehensiveness or accuracy. This data sheet is intended only as a guide to TFC products and services. Individuals using this data sheet must exercise their independent judgment in evaluating product selection and determining product appropriateness for their particular purpose and system requirements. TFC MAKES NO REPRESENTATIONS OR WARRANTIES, EITHER EXPRESS OR IMPLIED, INCLUDING WITHOUT LIMITATION ANY WARRANTIES OF MERCHANTABILITY OR FITNESS FOR A PARTICULAR PURPOSE WITH RESPECT TO THE INFORMATION SET FORTH HEREIN OR THE PRODUCT(S) TO WHICH THE INFORMATION REFERS. ACCORDINGLY, TFC WILL NOT BE RESPONSIBLE FOR DAMAGES (OF ANY KIND OR NATURE, INCLUDING INCIDENTAL, DIRECT, INDIRECT, OR CONSEQUENTIAL DAMAGES) RESULTING FROM THE USE OF OR RELIANCE UPON THIS INFORMATION. Patents and Patents Pending in the U.S. and foreign countries. Tyco reserves the right to change product designs and specifications without notice. All registered trademarks are the property of their respective owners. Printed in the USA.